

P008: Title of the paper using Title Style

A. N. Author, Affiliation, an.author@company.com [add email address of corresponding author]

X. Y. Author, Affiliation

Summary

Summary text up to 500 words, ideally a single paragraph (using italics font).

Key Words

Up to eight keywords, separated by commas (using italics font).

Introduction

It is expected that the authors submit carefully written and proofread material. The authors should present their results as concisely as possible.

If this LaTeX template is used for writing the paper, the headers and footers will be set automatically. Sections in this LaTeX template, where the authors are required to make specific changes e.g. author names and affiliations, are marked with “% !!!!!!!” comments at the beginning of a row. The authors are for example asked to replace the paper number “P008” in the template with their paper number, e.g. to “P145”. In this LaTeX template this can be done by changing the `\papernum{}` variable to e.g. `\papernum{P145}`. Corresponding authors can find their “PXXX” paper number in their profile page <https://eccc2026.org/profile-page> (then click on “Edit my full paper” button). Corresponding authors will also receive shortly a personal email with this number written on it.

The page numbering is going to be then set automatically in the proceedings.

The papers should use pre-defined styles as given in this template. Headings should NOT be numbered. The authors are discouraged from using other fonts.

Text Elements

Figures and Tables

The figure captions and table headings should be sufficient to explain the figure or table without needing to refer to the text. Figures and tables not cited in the text should not be presented.

The figure and tables shall be centered aligned and should be placed close after the paragraph of their first mentioning. Alternatively, they may also be entered at the end of the paper if necessary. All figures and tables shall be numbered with Arabic numerals. The figure captions should be centred below the figures. The table headings shall be centred above the tables.

Table 1: Table title, placed above the table

MC / EXEC	A. Di Gianfrancesco	Italy
WG1: Data Generation & Assessment Procedures	M. Schwienheer	TU Darmstadt, Germany
WG3A: Ferritic/ Martensitic	J. Hald	Technical University Denmark
WG3B: Austenitic	L. Vincent	CEA, France
WG3C: Superalloys	E. Poggio	Ansaldo Energia, Italy
hline Secretariat	I. Salvatori	RINA-CSM, Italy

Equations

Each equation should be presented on a separate line. The equations should be numbered consecutively at the outer right margin, and referenced as follows Eq. (1).

$$\frac{\sigma}{\sigma_{TS}} = \exp \left\{ -k_1 \left[t_f \exp \left(\frac{-Q_c^*}{RT} \right) \right]^u \right\} \quad (1)$$

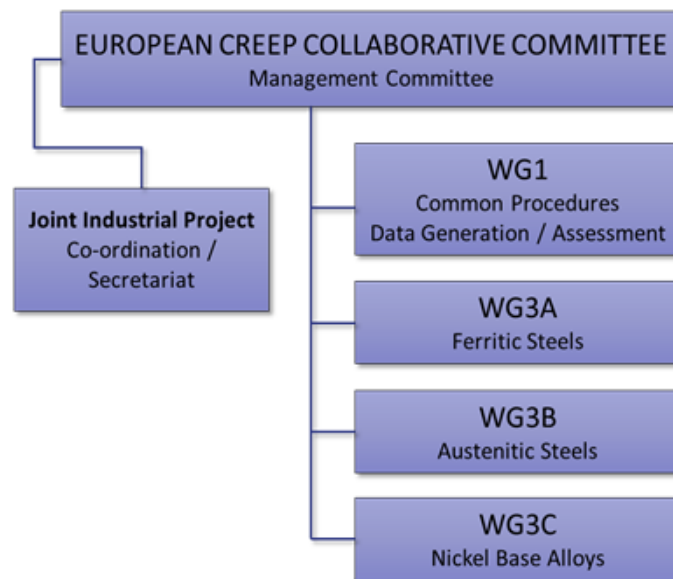


Figure 1: Figure title, placed below the figure

References

Reference numbers in the text should be designated by square brackets, e.g., [1, 2, 3, 4]. All the used references should be cited in the text and be listed in the same order as cited in the text. This LaTeX template already sorts the references in the required manner.

Sub sub section

This is an example of a sub sub section.

Submitting the paper

The paper should be submitted as a pdf file, based upon the ECCC2026 template. The submission of the paper must be done from your profile page <https://eccc2026.org/profile-page> (then click on “Edit my full paper” button) before 30th January 2026.

Acknowledgments

The organizers gratefully acknowledges the work done by all Organizing Committees, Scientific Committee, and the International Advisory Board of the ECCC 2026 conference.

References

- [1] H. L. Langhaar and S. C. Chu. *Development in Theoretical and Applied Mechanics*. Pergamon, 1970. pp. 84-100 (for a book).
- [2] S. Holmström. Defining a negligible creep temperature curve for gr. 91 steel. *International Journal of Pressure Vessels and Piping*, 146:198–202, 2016. <https://doi.org/10.1016/j.ijpvp.2016.07.004> (for paper in a journal).
- [3] J. E. Dendy Jr., B. Swartz, and B. Wendroff. *Computing travelling wave solutions of a nonlinear heat equation*, chapter Topics in Numerical Analysis, Vol. III, pages 447–463. Academic Press, 1977. (for a paper in contributed volume).
- [4] R. Baltus and A. Rubbers. Piping reliability improvement through passive seismic supports. In *Proc. Int. Conf. Nuclear Energy in Central Europe*, pages 251–258, Portorož, Slovenia, September 6-9 1999. Nuclear Society of Slovenia. (for a paper in a proceedings).